

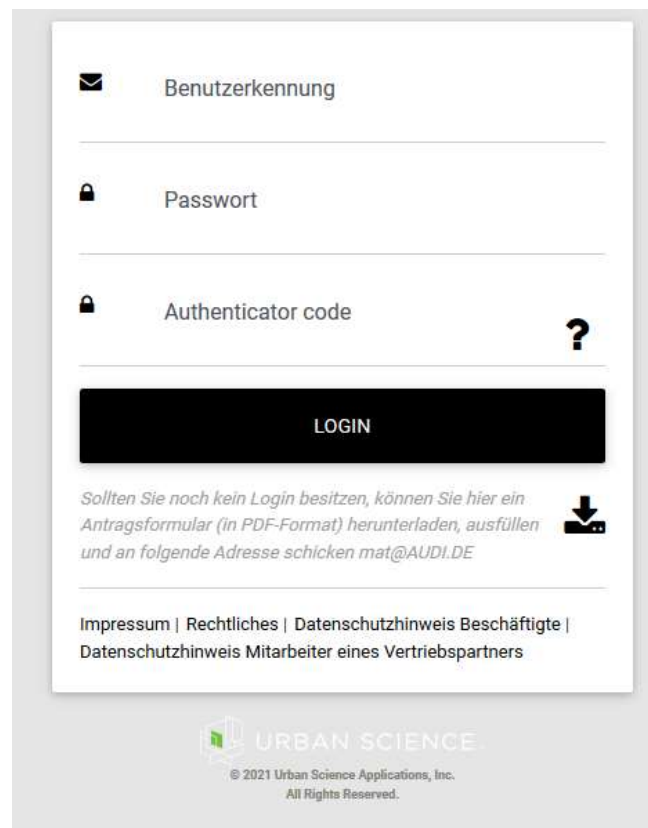
*The Audi MAT authentication now uses a 2-factor authentication procedure using a Authenticator. The login page will be extended with a 3rd field, "Authenticator code", where the Authenticator PIN needs to be entered for every login. For this purpose you can choose between Microsoft and Google Authenticator. The Microsoft Authenticator is recommended in the Audi environment.*

## Setup of MAT - Microsoft Authenticator

*To set this up, please first install the Microsoft Authenticator App from the Google Play Store or the Apple Store.*



*On your first login, the "Authenticator code" field can be left empty, and the user can enter only the known username and password.*




✉ Benutzerkennung


🔒 Passwort

🔒 Authenticator code ?

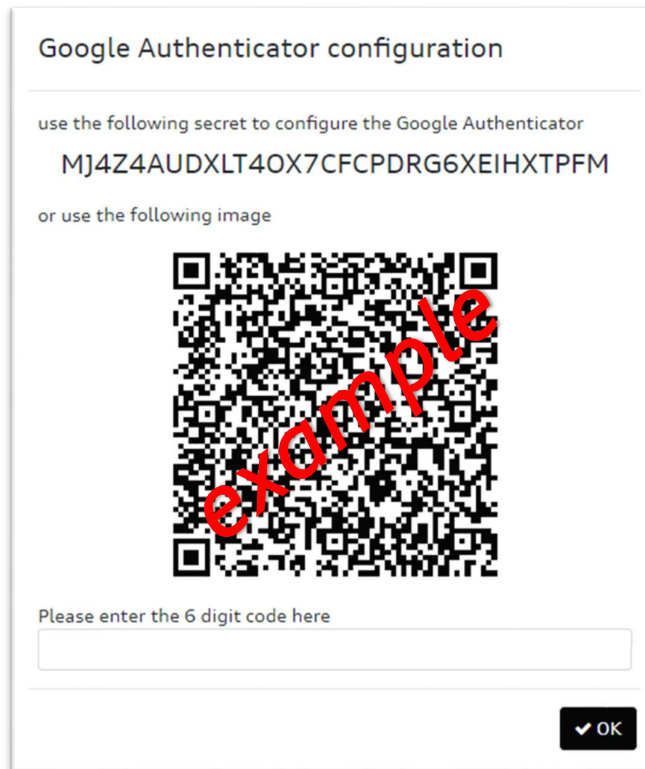
**LOGIN**

Sollten Sie noch kein Login besitzen, können Sie hier ein [Antragsformular \(in PDF-Format\) herunterladen, ausfüllen und an folgende Adresse schicken mat@AUDI.DE](#) 

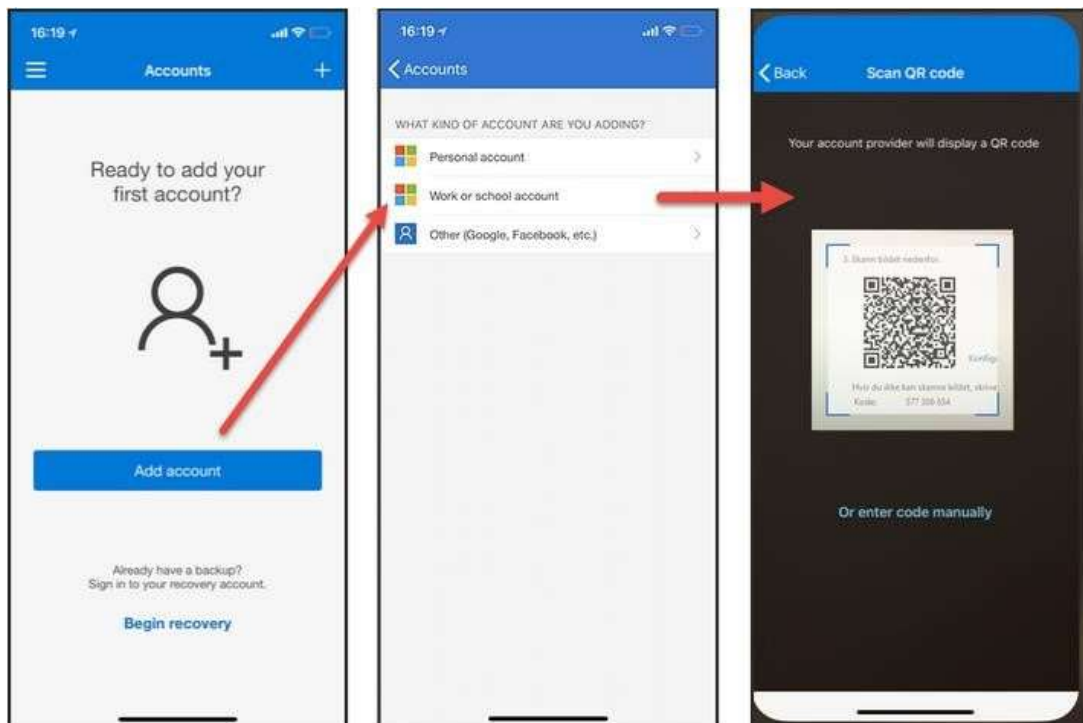
[Impressum](#) | [Rechtliches](#) | [Datenschutzhinweis Beschäftigte](#) | [Datenschutzhinweis Mitarbeiter eines Vertriebspartners](#)

 URBAN SCIENCE  
© 2021 Urban Science Applications, Inc.  
All Rights Reserved.

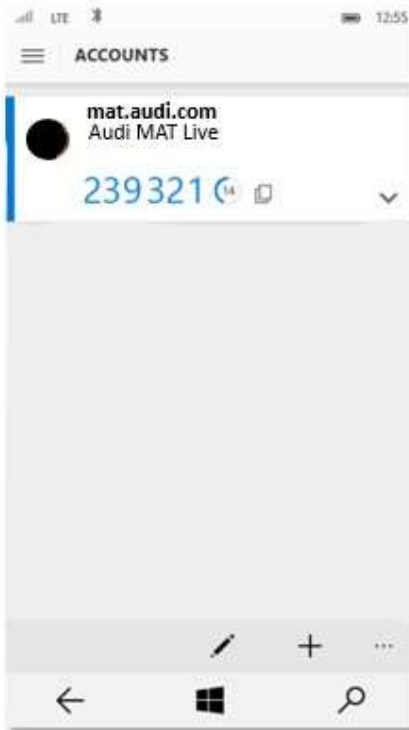
Before accessing the application, the user will be prompted to link his account with the new Microsoft Authenticator app.



To link the MAT to the Microsoft Authenticator application you can either manually enter the displayed code or scan the QR code from the screen and enter the initial code in the pop-up.



After successfully linking the account with the Microsoft Authenticator App, the user must enter the PIN provided in the app in the login page to successfully log in.



Each PIN is intended for use by only one user, is valid for 30 seconds, and becomes invalid after the user successfully logs in.

A screenshot of a login form. It has three input fields: 'Username' (with an envelope icon), 'Passwort' (with a lock icon and a series of dots), and 'Authenticator code' (with a lock icon and a question mark icon). The code '123456' is entered in the third field. Below the fields is a black 'LOGIN' button. Underneath the button, there is a link to a PDF application form: 'Sollten Sie noch kein Login besitzen, können Sie hier ein Antragsformular (in PDF-Format) herunterladen, ausfüllen und an folgende Adresse schicken mat@AUDI.DE'. At the bottom, there are links for 'Impressum | Rechtliches | Datenschutzhinweis Beschäftigte | Datenschutzhinweis Mitarbeiter eines Vertriebspartners'. The footer includes the 'URBAN SCIENCE' logo and copyright information: '© 2021 Urban Science Applications, Inc. All Rights Reserved.'

# Setup of MAT - Google Authenticator

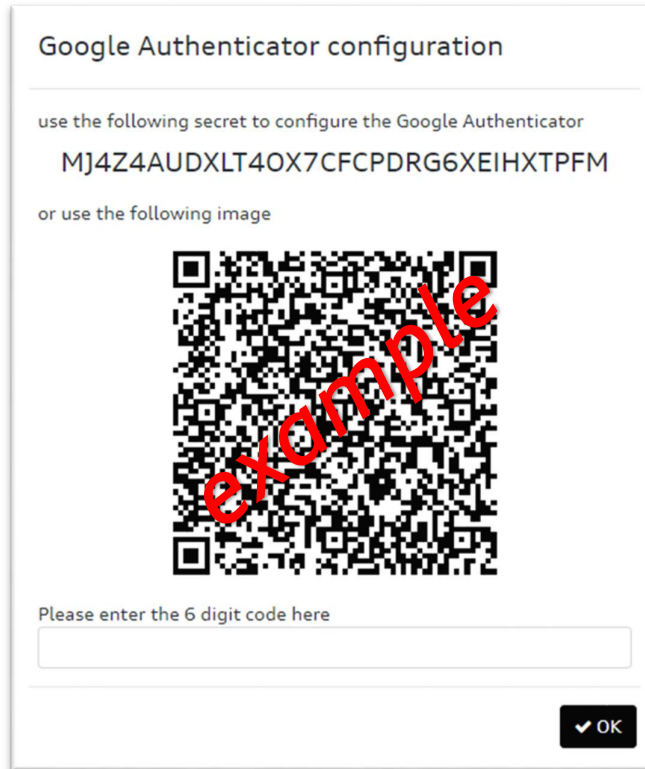
To set this up, please first install the Google Authenticator App from the Google Play Store or the Apple Store.



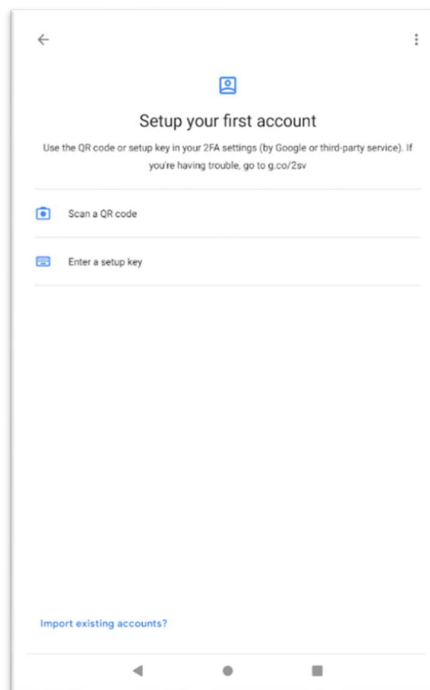
On your first login, the "Authenticator code" field can be left empty, and the user can enter only the known username and password.

A screenshot of a login form with a light grey background. The form contains three input fields: "Benutzerkennung" (username) with an envelope icon, "Passwort" (password) with a lock icon, and "Authenticator code" with a lock icon and a question mark icon to its right. Below the fields is a black "LOGIN" button. Underneath the button, there is a line of text: "Sollten Sie noch kein Login besitzen, können Sie hier ein Antragsformular (in PDF-Format) herunterladen, ausfüllen und an folgende Adresse schicken mat@AUDI.DE" with a download icon. At the bottom of the form, there is a footer with the text "Impressum | Rechtliches | Datenschutzhinweis Beschäftigte | Datenschutzhinweis Mitarbeiter eines Vertriebspartners". Below the form, there is a logo for "URBAN SCIENCE" and the text "© 2021 Urban Science Applications, Inc. All Rights Reserved."

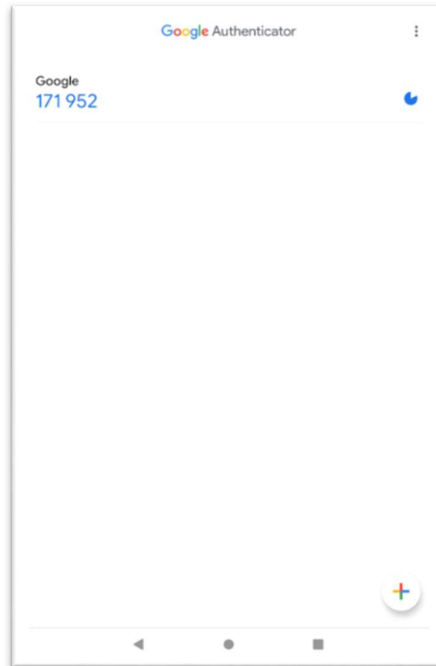
*Before accessing the application, the user will be prompted to link his account with the new google authenticator app.*



*To link the MAT to the Google Authenticator application you can either manually enter the displayed code or scan the QR code from the screen and enter the initial code in the pop-up.*



After successfully linking the account with the Google Authenticator App, the user must enter the PIN provided in the app in the login page to successfully log in.



Each PIN is intended for use by only one user, is valid for 30 seconds, and becomes invalid after the user successfully logs in.

A screenshot of a login page. It has three input fields: "Benutzerkennung" (Username) with an envelope icon, "Passwort" (Password) with a lock icon and a masked password of 12 dots, and "Authenticator code" with a lock icon and the code "123456". A question mark icon is to the right of the code field. Below the fields is a black "LOGIN" button. Underneath the button, there is a link to download a PDF form: "Sollten Sie noch kein Login besitzen, können Sie hier ein Antragsformular (in PDF-Format) herunterladen, ausfüllen und an folgende Adresse schicken mat@AUDI.DE". At the bottom, there are links for "Impressum | Rechtliches | Datenschutzhinweis Beschäftigte | Datenschutzhinweis Mitarbeiter eines Vertriebspartners". The footer includes the "URBAN SCIENCE" logo and copyright information: "© 2021 Urban Science Applications, Inc. All Rights Reserved."